



Vault² on AMD 64 X2 processors

THE INFORMATION IN THIS ARTICLE APPLIES TO:
Vault2/VaultXPRESS

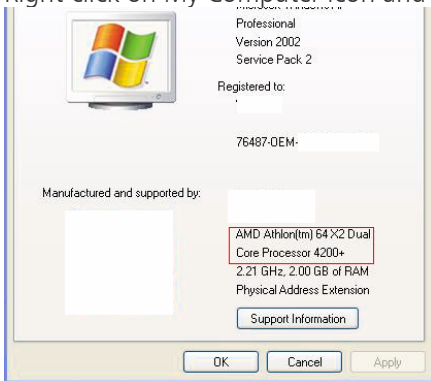
SUMMARY

When you plan to install, or have installed, AudioVAULT software on non-BE supplied computers and they have Local Sound Card and/or Local Audio Volume and the processor is an AMD Athlon 64 X2, AVServer for Window service may crash. Because of this, it is very important to modify AVServeW.exe affinity to use only one processor.

MORE INFORMATION

Verify that your PC actually has an AMD Athlon 64 X2 processor.

- Right click on My Computer icon and select Properties; you will see something such as the following:



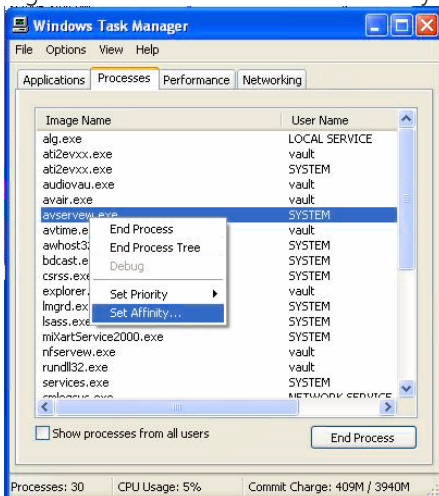
To modify AVserve.exe CPU affinity do the following:

Open Task Manager

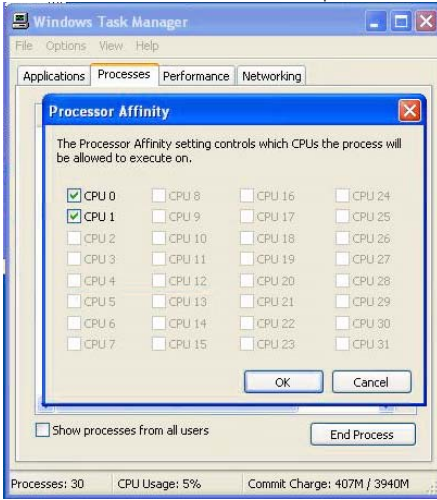
- Right click on Windows Task bar and select Task Manager

Select the Processes tab then Locate avserve.exe.

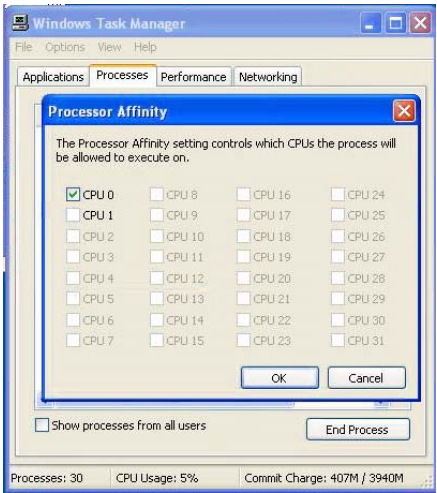
- Right click on it and select Set Affinity...



You will see that CPU 0 and CPU 1 options are selected.



Deselect CPU1 and click ok.



Close Windows Task Manager – Select File menu and click on Exit. Or click on the X on the dialog.

Affinity to CPU 0 only has been set.

For additional information on this topic, please contact Broadcast Electronics Digital Customer Service at 217.224.4700. You can also email specific questions to service@bdcast.com.