

Capturing Automation Output with HyperTerminal

THE INFORMATION IN THIS ARTICLE APPLIES TO:

All TRE versions

SUMMARY

TRE software processes information sent by an automation system and formats it for use with RDS, HD Radio, and Web applications. The automation system must send Filename, Category, Artist, Title, and Duration. The connection can be either serial or TCP.

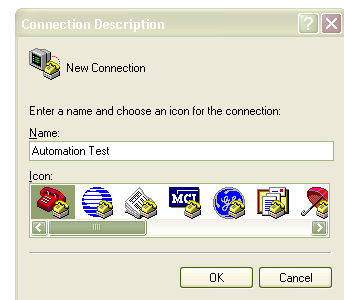
To verify the correct automation output, we request that a new site connect to the automation system from their TRE host PC and capture the output text using an application like HyperTerminal.

MORE INFORMATION

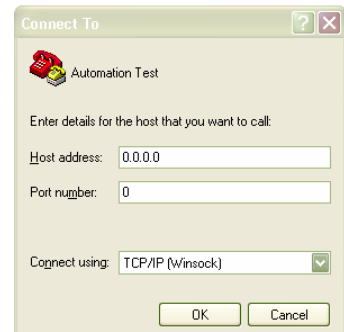
HyperTerminal is a Windows application used to connect to TCP-IP and Serial communications ports. HyperTerminal captures incoming data to the screen, and can save that data to a text file.

The first step is to open HyperTerminal. To do this click the Windows **START** button, point to **All Programs**, point to **Accessories**, point to **Communications**, and then click **HyperTerminal**.

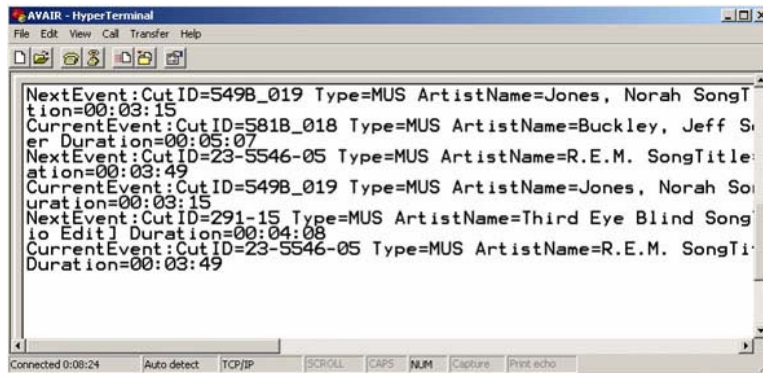
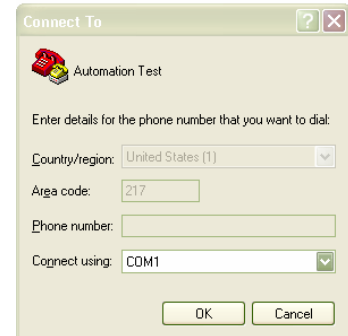
1. On the **File** menu, click **New Connection**.
2. In the **Name** box, type a name that describes the connection.
3. In the **Icon** box, click an appropriate icon, and then click **OK**.



4. In the **Connect To** dialog box, choose which port to use in the **Connect using** drop down box.
5. If connecting to a TCP/IP port, enter the host TCP/IP address and the port to connect to. If HyperTerminal cannot connect, verify the host is available and sending or capable of sending data.



- If connecting to a serial port, select the appropriate port number. Click **OK** and adjust the setting to match the port settings on the host computer and then click **OK**.

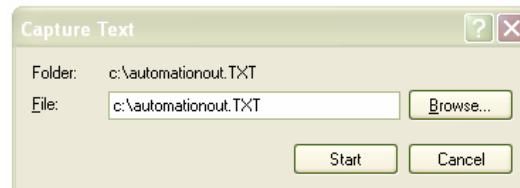


If configured properly, on-air data will be displayed in the HyperTerminal window. This example data was received from AVAir. The look of the output may vary depending on the host automation system, but must include **CutID**, **Type**, **ArtistName**, **SongTitle** and **Duration**.

CAPTURING TEXT INPUT WITH HYPERTERMINAL

Once a HyperTerminal connection is established, you can save the incoming data to a text file. This file should be sent to customer service prior to installation of TRE.

- Click on the **Transfer** menu and click **Capture Text**.
- In the **File** box, type **c:\automationout.txt**, and then click **Start**.



After capturing a few events, go back to the **Transfer** menu. Select **Capture Text** again. Choose **Stop** and the captured text is written to the file. The file can be viewed in notepad or attached to an e-mail.

For additional information on this topic, please contact Broadcast Electronics Digital Customer Service at 217.224.4700. You can also email specific questions to service@bdcast.com.