



# Setting up Remote Voice Tracking

Broadcast Electronics Technical Paper

## THE INFORMATION IN THIS ARTICLE APPLIES TO:

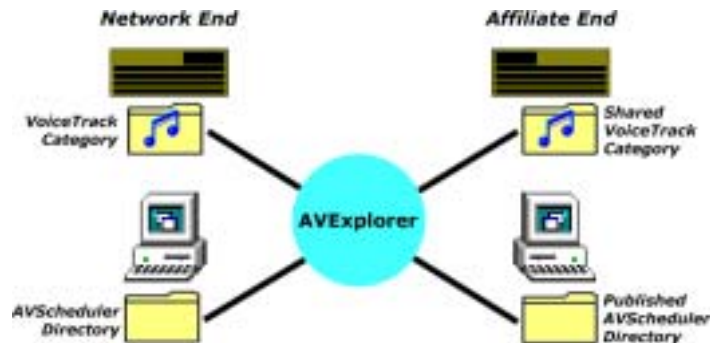
All AVScheduler/VoiceTracker versions 6.6x and higher

## SUMMARY

Remote Voice Tracking (RVT) was designed to allow radio networks to cut voice tracks for affiliate stations. RVT uses the Voice Tracker component of AVScheduler to create the voice tracks, and the resultant audio files and CSAW file are sent to the affiliate via TCP/IP. AVExplorer is used to facilitate the movement of files, and must be properly configured on both the network and affiliate end.

## MORE INFORMATION

Once AVExplorer is installed and working, most of the configuration for EVT is done at the network. In addition to sharing AudioVAULT categories, the affiliate must also publish the AVScheduler data directory, which will accept the CSAW/AVScheduler file.



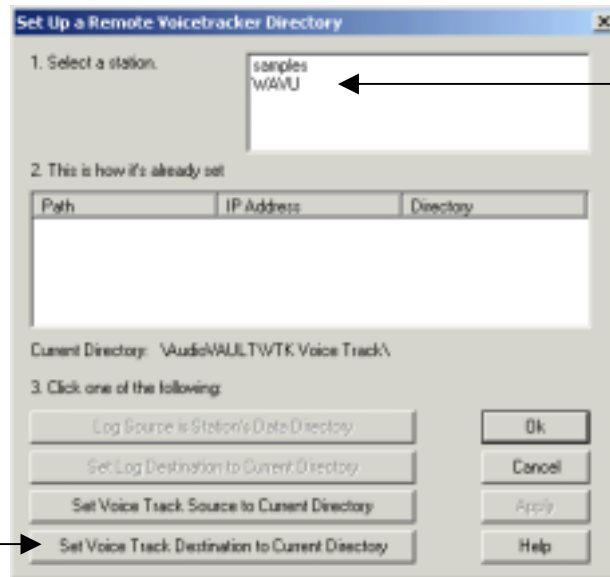
On the network end, open AVExplorer and browse to the Remote site's Voice Track category. Right-click and click the **Remote Voice Track** option.



Within this dialog, you'll set the four options necessary for RVT:

Log Source	Where is the CSAW file stored on the local system?
Log Destination	Where should the CSAW be sent on the remote system?
Voice Track Source	What category contains VT audio files on the local system?
Voice Track Destination	To what category should RVT send VT audio on the remote system?

First, select the station you want to set up from the available list.



Since you're in the Remote site's Voice Track category, click the **Set Voice Track Destination to Current Directory** button. Click **OK**.

The RVT Log Source will always default to the station data directory, which is where the CSAW files are located. The RVT Log Source cannot be changed in AVExplorer. It must be changed in AVScheduler.

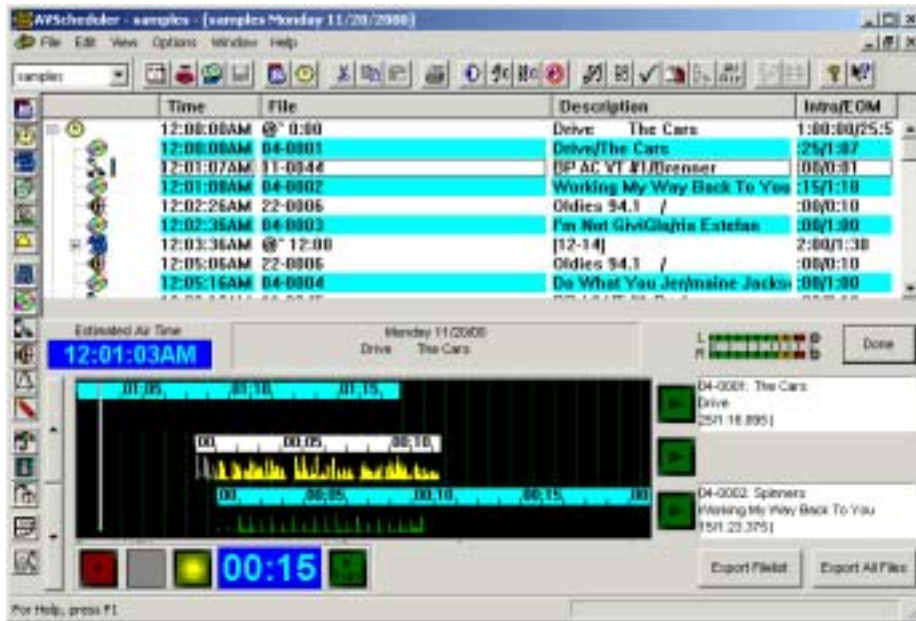
Browse to the Remote site's published AVScheduler Data Directory and right-click on it. Click the **Remote Voice Track** option. On the **Set Up a Remote Voicetracker Directory** dialog, click the **Set Log Destination to Current Directory** button. Click **OK**.

Once you have all four paths defined, RVT configuration is complete.

## USING RVT

---

Remote Voice Tracking uses the Voice Tracker component of AVScheduler. Once the voice track session is complete, the operator needs to click one of two buttons to “send” the voice tracks to the remote site.



**Export Filelist** will send the entire CSAW file, but will only send the voice tracks cut during the current voice track session.

**Export All Files** will send the entire CSAW and send all voice tracks in the defined voice track category.

---

For additional information on this topic, please contact Broadcast Electronics Digital Customer Service at 217.224.4700. You can also email specific questions to [service@bdcast.com](mailto:service@bdcast.com).