



# AVScheduler Reconciliations

Broadcast Electronics Tech Note

## THE INFORMATION IN THIS ARTICLE APPLIES TO:

All AVScheduler versions

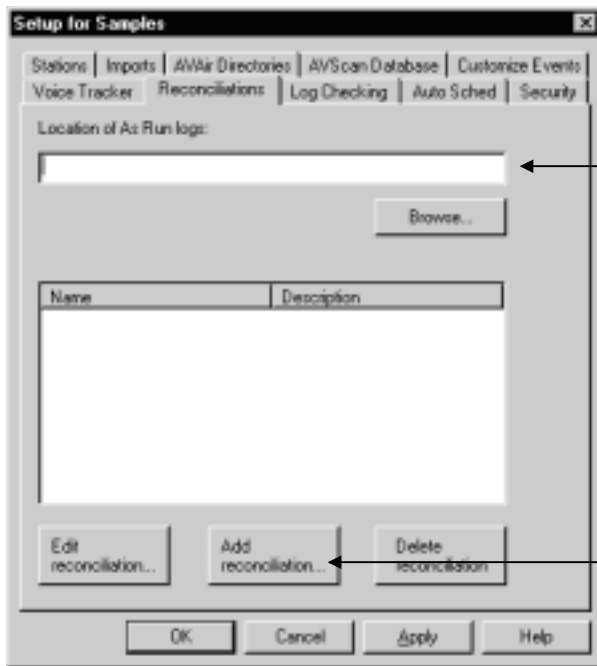
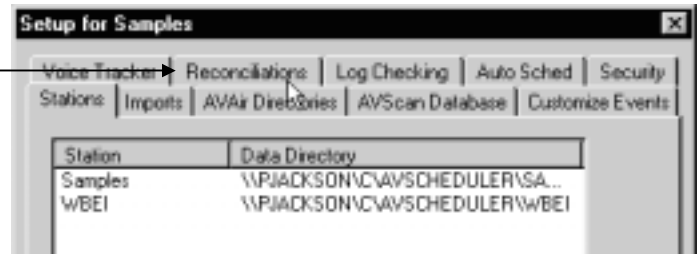
## SUMMARY

AVScheduler has the ability to compare what was scheduled for a specific day, compare that information to what actually aired and create a reconciliation report. Reconciliations are performed on specific categories and can report information needed by the user.

## MORE INFORMATION

To set up a reconciliation, open AVScheduler. Cancel out of the **Calendar** and click **Options** on the text menu. Select **Setup**.

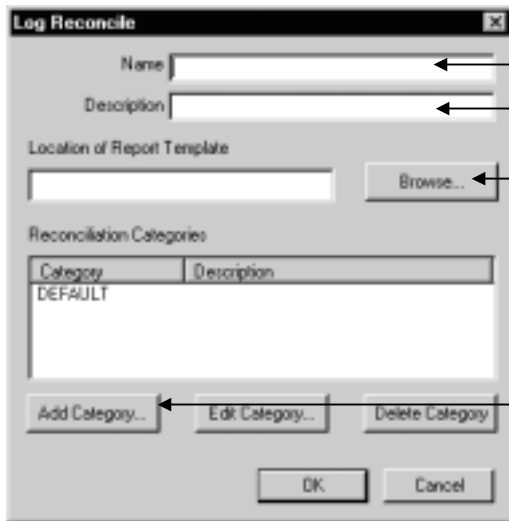
Once the Setup dialog is up, click on the **Reconciliations** tab.



First, we need to tell AVScheduler where to get as-run information from. That information is stored in daily database files written by AVAir with an MDB extension. Click **Browse** and navigate over the network to the station's **AVAir directory**, and click **Open** to select the directory.

Next, click **Add reconciliation...**

After clicking **Add reconciliation...** you'll see the **Log Reconcile** dialog.



Enter the **Name** of this report. **Traffic**, for example.

Enter the **Description** (usually the same as **Name**).

Your **Report Template** determines how your reconciliation is formatted. Click **Browse**, navigate to the **Report** folder (*it's up one level*) and choose **Landscape Log Rec.rpt**

Reconciliations are based on AudioVAULT category. A reconciliation may check just one category, or multiple categories. To add a category to the list of items you want to check, click **Add Category...**

After clicking **Add Category...** you'll see this dialog:

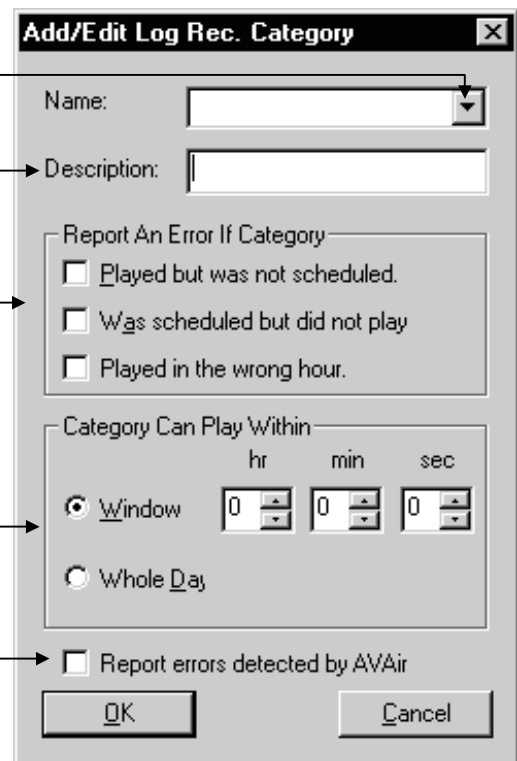
This box drops down to show a list of available categories. Click the drop-down arrow and select a category to reconcile.

**Description** will fill in automatically from the category file.

Set your options. What do you want to see in your report?

You can set these values to have the reconciliation report if an event plays too far away from its Estimated Start Time (when it was scheduled to play.)

This check box determines if general AVAir errors are included in your report. This includes messages like **Cut out of date** and **Cut Missing**.



Once you've configured settings, click **OK**. You'll see your category listed in the **Log Reconcile** dialog.


Click OK to close the **Log Reconcile** dialog.

Click OK to close the **Setup** dialog.

## RUNNING A RECONCILIATION

---

Open AVScheduler. From the calendar, open the date you want to reconcile.

On the top toolbar, click the Reconciliation icon.  You'll see a list of configured reconciliations. Click one to run the report.



---

For additional information on this topic, please contact Broadcast Electronics Digital Customer Service at 217.224.4700. You can also email specific questions to [service@bdcast.com](mailto:service@bdcast.com).