



# AVExplorer Setup

Broadcast Electronics Technical Paper

## THE INFORMATION IN THIS ARTICLE APPLIES TO:

All AVExplorer Versions

---

## SUMMARY

AVExplorer facilitates the movement of files around an AudioVAULT network. It is based on the FTP protocol, and can move audio files between AudioVAULT servers, audio files between an AV server and a Windows folder (with integrated WAV conversion), or text files between two Windows folders.

All machines running AVExplorer must have TCP/IP installed and configured. AVExplorer reads User Names, Passwords and Permissions as defined by AVMaint, so those items must be configured before using AVExplorer as well.

AVExplorer includes two applications, the AVExplorer Client and the AVFTPServer. AVFTPServer must be running on all machines that share resources. The Client is then configured to access those resources.

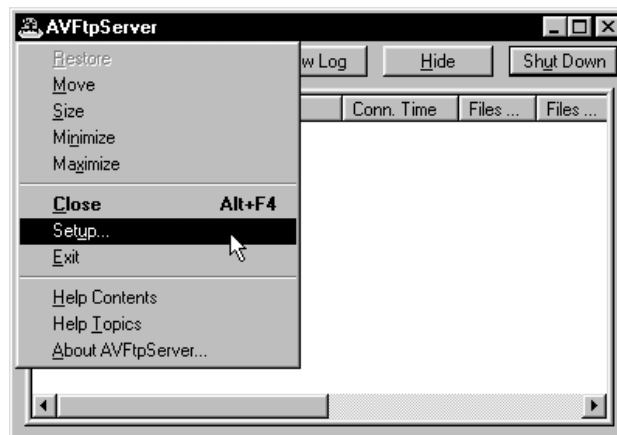
---

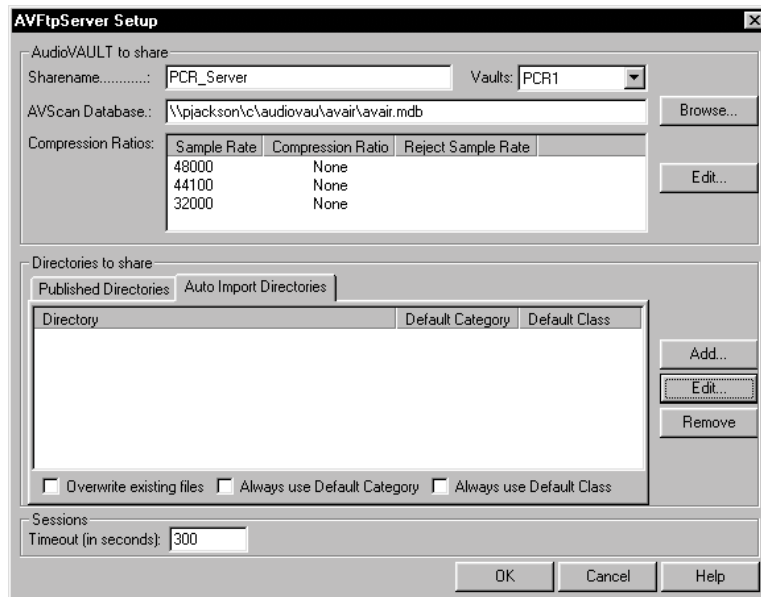
## MORE INFORMATION

AVExplorer requires very little configuration. The majority of the configuration is done on each of the AVFTPServer sites. The AVExplorer Client sites are simply configured to see each of the AVFTPServer sites' shared items.

The AVFTPServer program needs very little information to get running.

1. Start AVFTPServer
2. Move the cursor to the top left corner of AVFTPServer and single click with the left mouse button on the AVFTPServer icon.
3. Move the cursor to **Setup** and single click with the left mouse button.



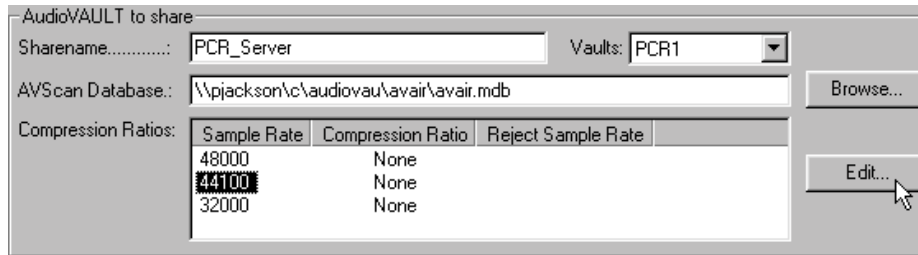


### Items found in Setup

<b>Sharename</b>	This is the name of this FTP Site as it will appear in the "AudioVAULT Neighborhood."
<b>Vault</b>	If access to AudioVAULT audio files is intended, an AudioVAULT server containing audio files must be specified. A Vault must also be specified to take advantage of the AudioVAULT Security Model.
<b>AVScan Database</b>	This is the name and location of an AVAir.MDB file on the local network. This is a necessary item in order for AVExplorer to display the listing of available files.
<b>Compression Ratios</b>	With the addition of a hardware key, AVExplorer can compress incoming WAV files. Compression rates for files with sample rates of 48K, 44100 and 32K can be compressed as they are imported. Without the hardware key, files are imported at their original compression rate. A linear 48K WAV file, for instance would be a linear 48K AudioVAULT file.
<b>Published Directories</b>	This allows AVFTPServer to make available non-AudioVAULT files. Typically, the directories that are shared are the Station Directories for AVScheduler, Music Log directories, Traffic Log Directories, and the AVAir directories of the On-Air workstation. The mapping of published directories can be local "C" drive on the computer, a mapped network drive, or UNC.
<b>Auto Import Directories</b>	AVFTPServer can be configured to "watch" a specified directory. If a WAV file is dropped into that directory, it is automatically imported into the AudioVAULT.
<b>Sessions: Timeout</b>	This is the time after which AVFTPServer will report loss of activity.

## SETTING UP THE COMPRESSION FEATURE

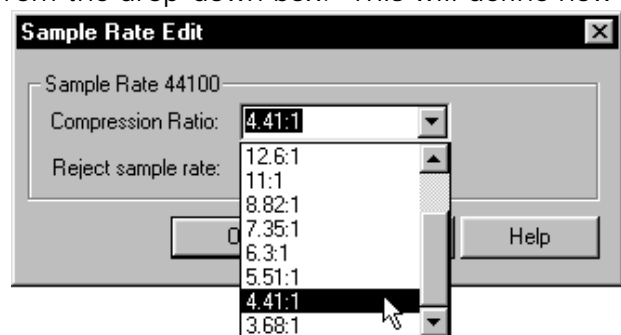
To enable the Compression feature, the computer doing the import must be equipped with a hardware key. The dongle can be purchased from Broadcast Electronics. Without the key, AVExplorer can still import files, but it will leave their initial compression rate unchanged.



Once the hardware key is attached to the computer's parallel port, enter AVFTPServer's setup dialog. Highlight a sample rate and click **Edit**.

In this example, we'll tell AVExplorer how to compress files that have a sample rate of 44100. **AVExplorer only can change Compression rate; it cannot change a file's Sample Rate.**

After clicking **Edit**, select the compression rate from the drop-down box. This will define how AVExplorer treats files of this Sample Rate. By selecting **4.41:1**, all files auto-imported from the AutoImport directory with a 44100 sample rate will be imported into the AudioVAULT at 4.41:1.

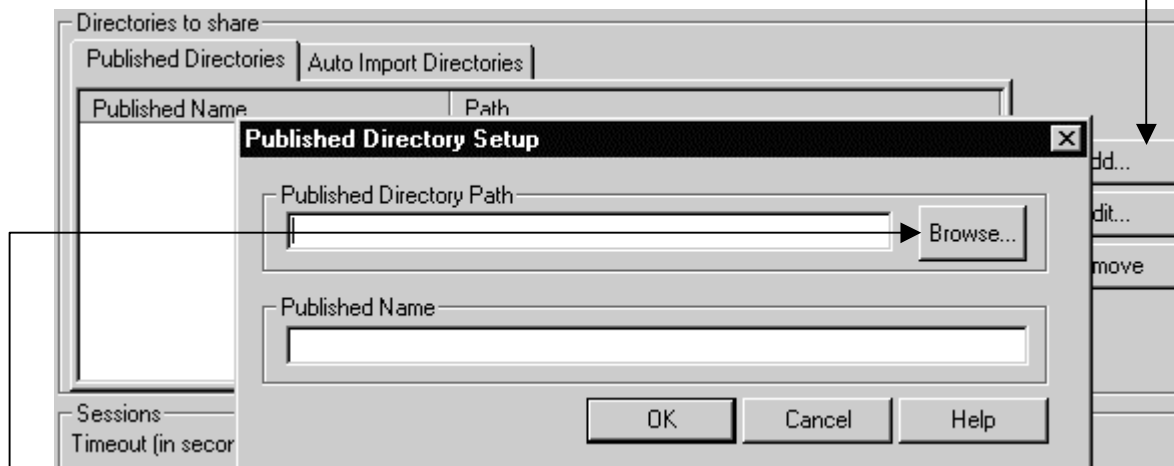


Set the Compression Rate for the other sample rates, and click OK.

If you want to refuse files of a specific rate (48K, for instance) simply **Edit** that Sample Rate and click the **Reject Sample Rate** checkbox.

## SETTING UP PUBLISHED DIRECTORIES

A **Published Directory** is simply a Windows folder that can be accessed by AVExplorer Clients. For example, if you wanted to use AVExplorer to transfer Music Schedules from one computer to another, you could publish the directories that contain the files. Those Published Directories can be viewed and browsed in the AudioVAULT Neighborhood with the AVExplorer Client. To set up a Published Directory, enter AVFTPServer's Setup Dialog and click on the Published Directories tab. Move the cursor to the **Add** button and single click.



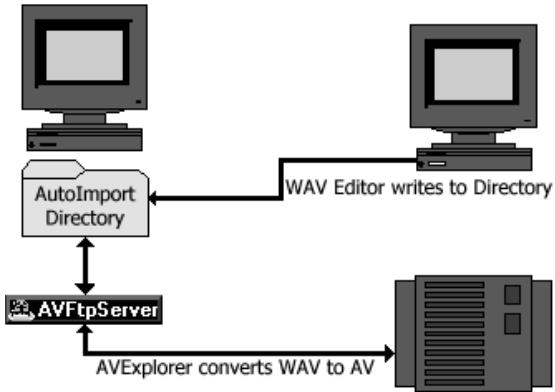
Move the cursor to the browse button, then single click and browse to the proper directory to publish or share.

Finally, enter the Published Name. This is how the folder will appear in AVExplorer.

## SETTING UP AUTOIMPORT DIRECTORIES

By configuring AutoImport, you can tell AVExplorer to "watch" a specified directory for new WAV files. When AVExplorer sees a new WAV file, it automatically imports it into the AudioVAULT, using the original WAV file's name as the new AudioVAULT file name.

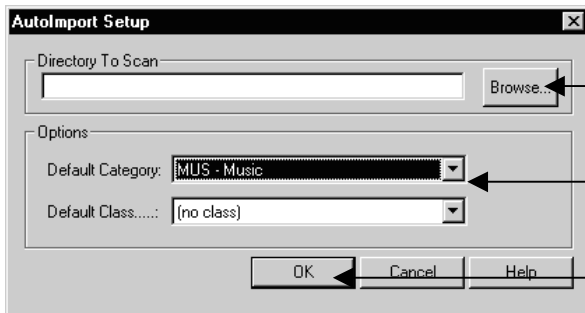
AVFTPServer scans these directories periodically for files to be imported into the AudioVAULT.



AutoImport can be used in conjunction with the Compression Agent if the computer is equipped with the correct hardware key, or as a pure import device if no key is present.

To configure AutoImport, simply tell AVExplorer which directories to scan, and what AudioVAULT Category and Class the resultant AudioVAULT files should go into.

To set up an AutoImport Directory, enter AVFTPServer's Setup Dialog, click on the AutoImport Directories tab, and click **Add**. You'll see the **AutoImport Setup** dialog.



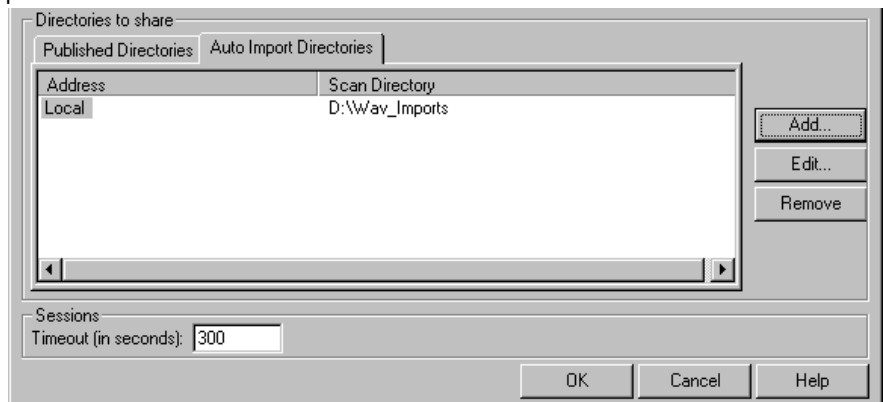
Simply browse to the directory you want AVExplorer to watch,

set the Category and Class for files to be imported from that directory,

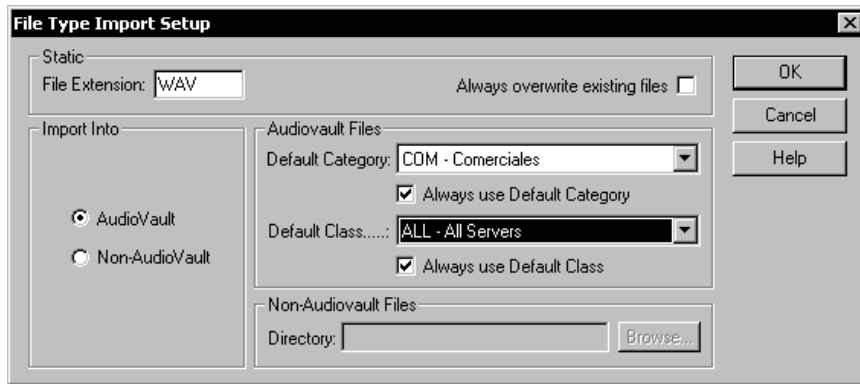
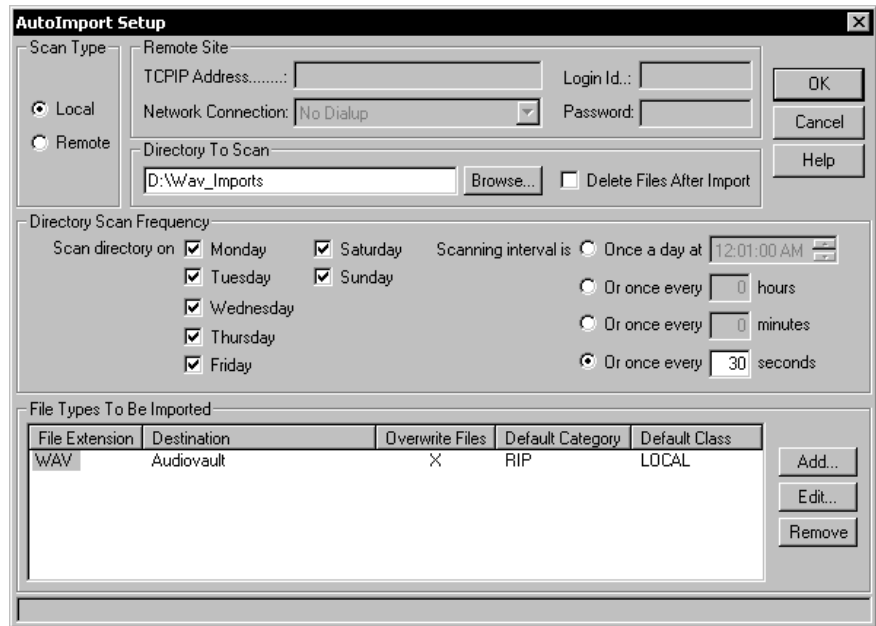
and click OK.

The Auto Import directories can be local drives on the computer, mapped network directories, or mapped UNC directories. Different directories can be configured to import files of differing formats. For example, separate directories may be configured to import country music while another directory is used to import rock music.

When you are ready to add specific directory click on the Add button, then you will have the option of selecting a local network scan or a remote scan. For remote scans you need to specify the TCP/IP Address, the Username or login ID and the password of the computer where AVFTPserver will be downloading the files from. You can also specify the frequency of scanning for the desired directory and if allowed to delete files after import.



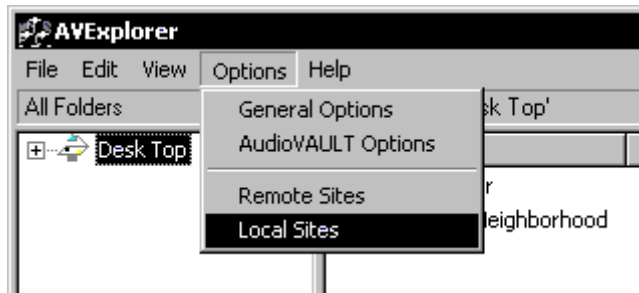
The last step is to tell AVExplorer if you want it to overwrite existing files, Always use the Default Category, and Always use Default Class. Imported AudioVAULT files will have the same name as the original WAV file.



## AVEXPLORER CLIENT SETUP

Configuration options in the AVExplorer Client application can be accessed through the "Options" Menu.

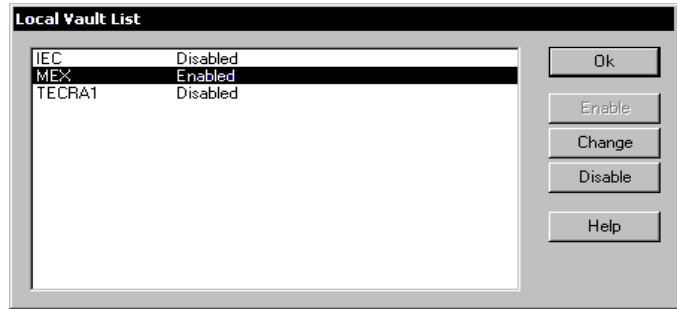
When the user clicks on Options they will find four choices: General, AudioVAULT, and Remote Sites and Local Sites.



- The General Options allows the user to set the connection timeout. The default is 60 seconds.

- The AudioVAULT Options allows the user to customize the views within AVExplorer as they relate to elements stored in AudioVAULT.

- The Local Sites allows the user in AVExplorer to Enable the available Local Sites. These are local Audio Volumes within the same LAN.



- The Remote Sites allows the user to configure AVExplorer to Configure the Remote Sites. You need to provide a TCPIP address, a login ID and a password; usually remote sites are FTP Servers.

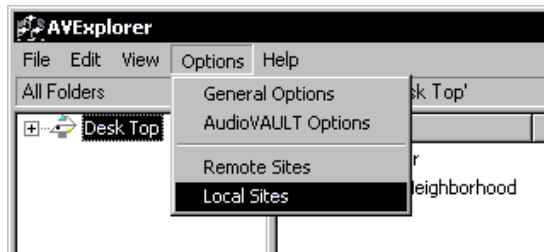


## ADDING REMOTE SITES

Adding a Remote Site to AVExplorer is essential in order to be able to see the content of those remote Sites. By adding a site AVExplorer will be able to recognize all the available shares at that particular site, whether they are AudioVAULT audio files or other type of files.

To add a Site:

- Start AVExplorer.
- Move the cursor to Options and Remote Sites and single click with the left mouse button.

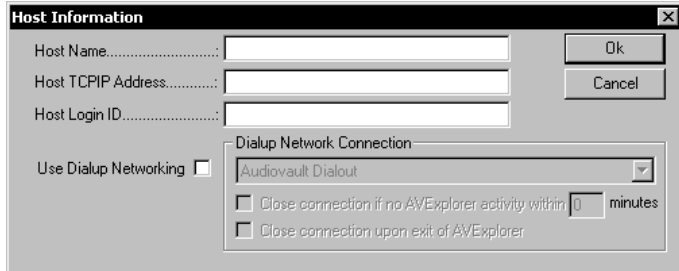


- After clicking on Remote Sites an empty list of sites will appear on the screen.



- Click on the "ADD" button. The Site Edit dialog will appear on the screen.

- Type in the Name of the site in the space provided. Move the cursor to the “ADD” button and single click. This is how the site will appear in this AVExplorer Client’s “AudioVAULT Neighborhood.”
- The Host Information dialog will pop up. This dialog requires the FTP Server HostName, its TCP/IP Address, and the default Login ID (Name) to be used when accessing the site.

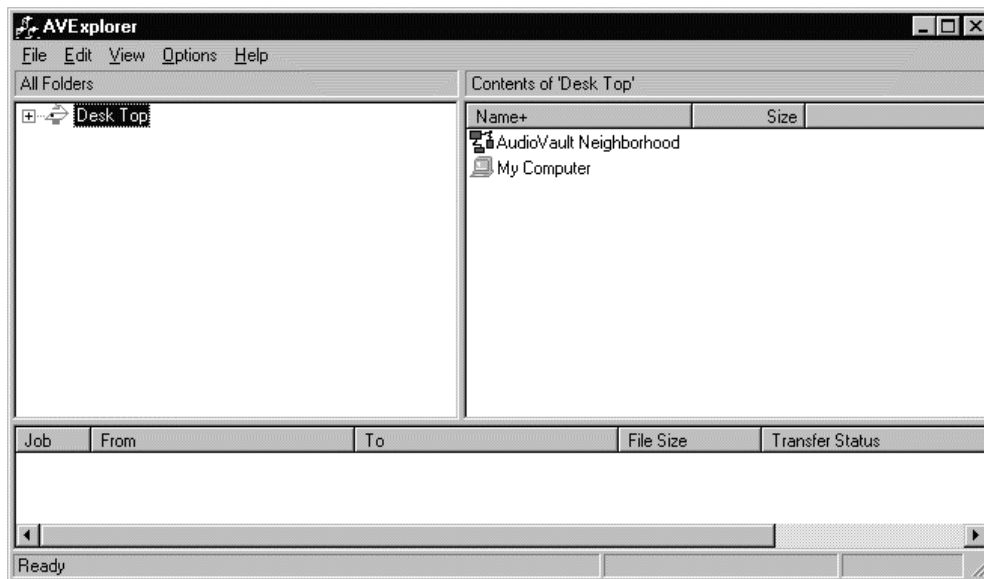


Once the appropriate information has been filled in, move the cursor to OK and single click with the left mouse button. This will take you back to the Remote Site Edit dialog, which now lists the Site you’ve just added, along with the other Sites you’ve configured. To configure multiple sites, simply repeat the above steps.

After you’ve configured all your sites press OK. This will take you back to the Site List.

## USING AVEXPLORER

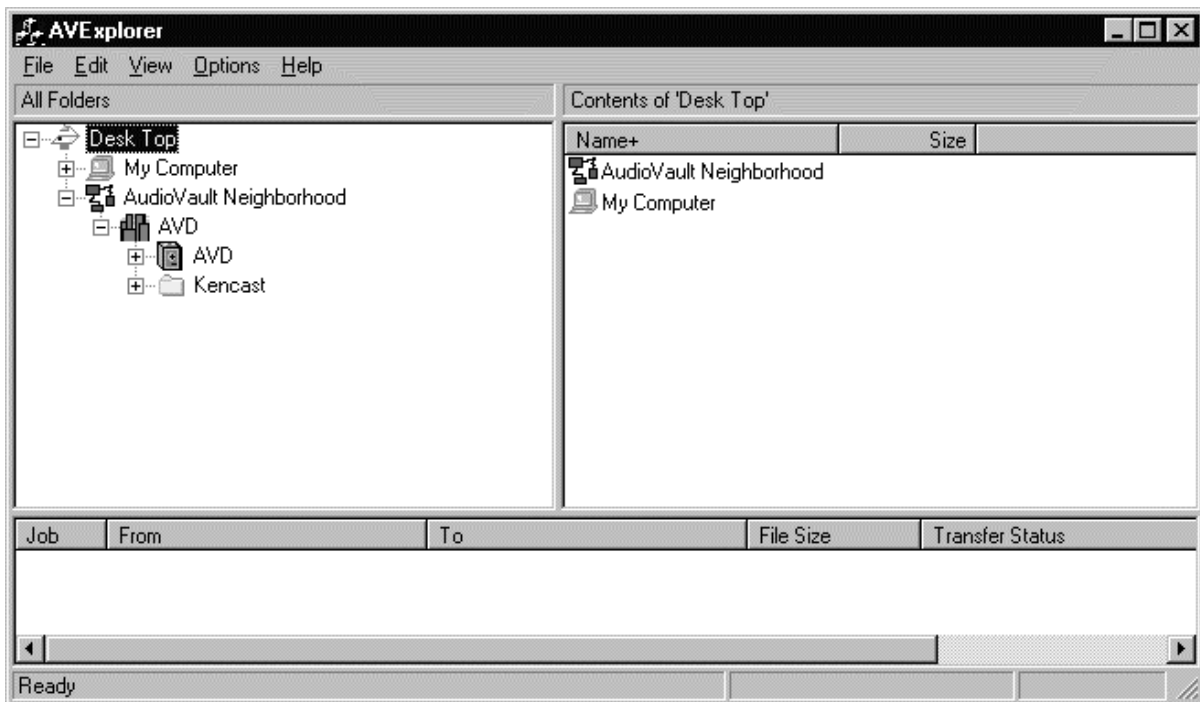
Launch AVExplorer from the Desktop or Start Menu Icon. When the window first comes up, all items will be collapsed.




Expand (click on the “Plus” sign) the DeskTop, and then expand the AudioVAULT Neighborhood. Select the Site you want to connect to by clicking on it; then you will get a prompt for your User Name and Password as defined in AVMaint’s Security dialogs. **Security settings must be configured before using AVExplorer.** When the Logon screen pops up, enter your User Name and Password:



Expanding the items listed under AudioVAULT Neighborhood will show AudioVAULT Categories represented as “folders” and Published Windows Directories on the computer hosting the AVFTPServer. In the example below, we can access AudioVAULT categories by expanding AVD, or access the Windows folder “Kencast” by clicking on Kencast.

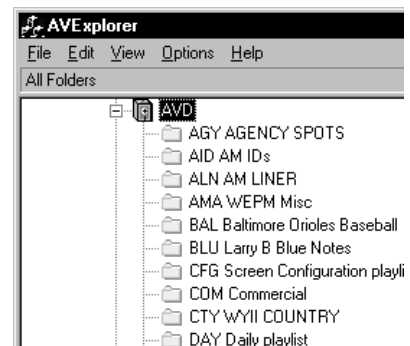


Once we expand AVD, we see the Categories on AVD represented as “folders.”

 **Category names and their descriptions cannot contain numbers. While AudioVAULT technically allows this, AVExplorer sometimes will not recognize them correctly.**


Highlight a Category, and we see the AudioVAULT files in that category:

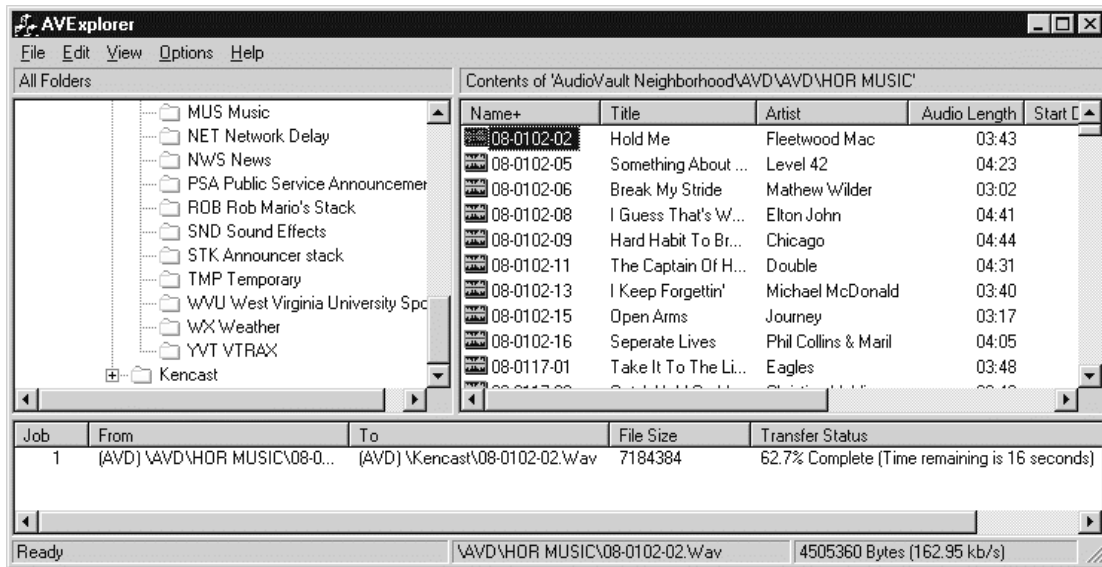
Contents of 'AudioVault Neighborhood\AVD\AVD\HOR MUSIC'			
Name+	Title	Artist	Audio Length
08-0102-02	Hold Me	Fleetwood Mac	03:43
08-0102-05	Something About ...	Level 42	04:23
08-0102-06	Break My Stride	Mathew Wilder	03:02
08-0102-08	I Guess That's W...	Elton John	04:41
08-0102-09	Hard Habit To Br...	Chicago	04:44
08-0102-11	The Captain Of H...	Double	04:31
08-0102-13	I Keep Forgettin'	Michael McDonald	03:40
08-0102-15	Open Arms	Journey	03:17



categories, drop it on the published directory and an automatic WAV conversion will be performed.

If more than one Site is configured, you can drag and drop files between Sites. If a directory is “published,” like Kencast, then you can drag a file from the AudioVAULT

In this example, we dropped "08-0102-02" on  Kencast. The Status pane at the bottom of the AVExplorer window shows the Transfer Status and Estimated Time to completion. The bottom Status Bar shows the current transfer status in bytes, and the current transfer speed.



AudioVAULT files converted to WAV files can be edited in any WAV editor. The process works both ways. WAV files can be dragged from a Published Directory to an AudioVAULT category.

---

For additional information on this topic, please contact Broadcast Electronics Digital Customer Service at 217.224.4700. You can also email specific questions to [service@bdcast.com](mailto:service@bdcast.com).