



Changes in AudioVAULT Software Setup 9.00

THE INFORMATION IN THIS ARTICLE APPLIES TO:
Vault2/VaultXPRESS

SUMMARY

On AV v8.40 we made some changes to the installation software to provide an easier install and upgrade process. These changes include: New Welcome Screen, AudioVAULT Framework, new Component Selection screen and new screen for Other AV Systems. With the release of AudioVAULT software 9.0 we have added a few changes to the Setup routine. These changes refer to the way local and remote file systems are used.

MORE INFORMATION

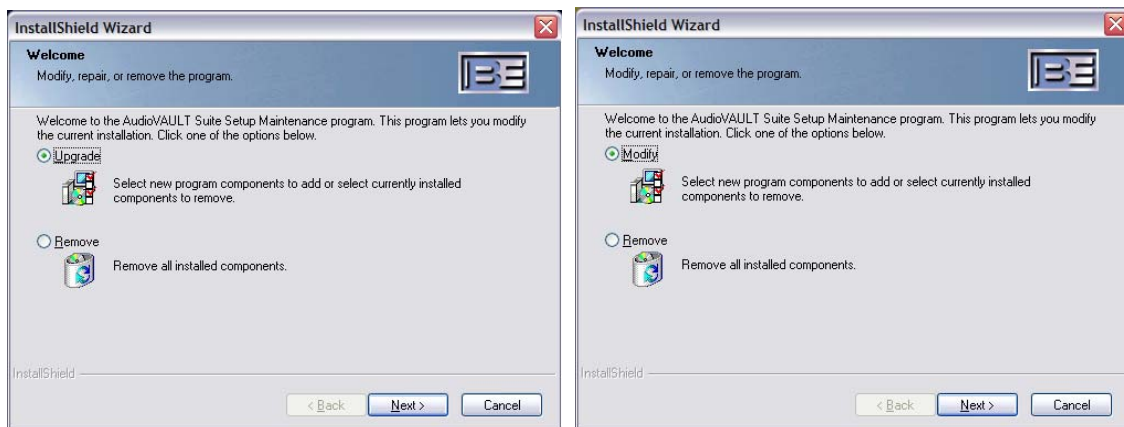
In this version we continue with the pre-installation of AudioVAULT Software to install support components. This is done with AudioVAULT framework. During this step, three Windows components are installed if they are not already installed.

The components to be installed are:

- Internet Explorer 6 SP1
- DirectX 9
- .Net framework

These were necessary for the new setup features to be implemented. Adobe Acrobat Reader 6.0 is another application that also is installed with 9.00.

During an upgrade you'll see a different Welcome Screen; it now only has two options (just as 8.4x versions did): Upgrade or Remove. The Repair option is no longer available.



If a Repair Install is necessary, run setup again. In this case, the Welcome screen will show the Modify option, instead of Upgrade, which will install missing AudioVAULT files.

Another change is in the Select Components Screen. In previous versions you had to select application by application. This made it difficult for users without previous setup experience to know which options to select to install the needed applications during a new installation.

In the new Select Components Screen, we have simplified the list of options. We have grouped the applications. During an upgrade the correct groups will be already selected.

The new groups are: Production, On Air, Scheduling Tools, Server Applications, Engineering Applications, NewsBoss and Flex License Manager Server.



Production Group will install applications such as AVRPS, AVNET, AVProd, AVExplorer Client and other utilities like AVImport/Export, AVFileMaint, NetDelay and AVPanel.

On Air Group will install applications such as AVAir, AVSat, AvWeb, and utilities like AVPanel.

Scheduling Tools Group will install applications such as AVScheduler, AVTrafficBilling, and utilities such as AVAutoRun, AVImpPI, AVChklog, and NetDelay.

Server Applications Group will install applications such as AVServer for Windows, NFServer for Windows, AVExplorer Server (AVFTPServer).

Engineering Applications Group will install applications and utilities such as AVMaint, AVCfg, AVFixup, AVFileMaint, AVLogs, AVRename, etc.

NewsBoss Group will start the Setup on NewsBoss applications. If you have licensed this optional component you can install it or upgrade it. This is the only component that has its own setup and only gets started by the AudioVAULT setup.

Content Depot Group will install the Content Depot application for stations using the NPR Content Depot file management system.

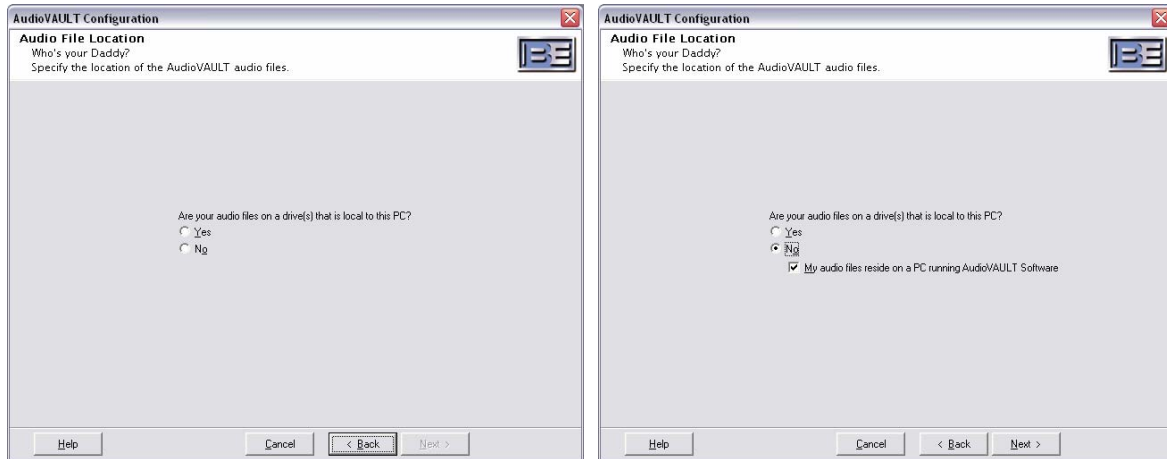
Flex License Manager Group will install the Flex License Manager and the necessary drivers to support it.

Now Playing Group will install the RDDI.exe and support files required for Now Playing applications. (Optional - Requires a license to run)

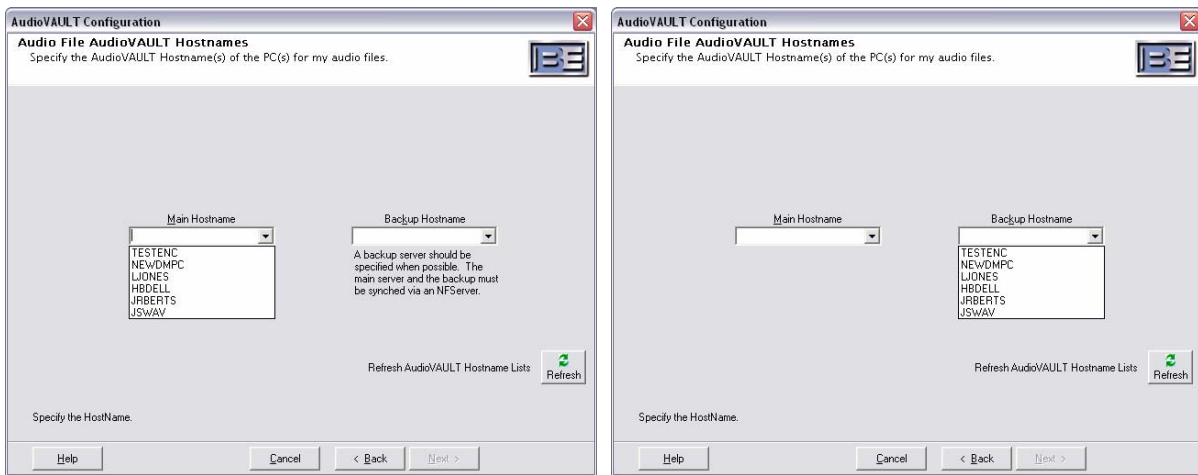
Applications that will always install: AVTime, AVScan, AVPreviewTool, AVDisk, AVDbm, AVDBview, FadeCfg, Help Files, Online Electronic Manuals and PFE.

For additional information on this topic, please contact Broadcast Electronics Digital Customer Service at 217.224.4700. You can also email specific questions to service@bdcast.com.

A new component to the setup is the screen where you will indicate if the audio volume (storage) is local or remote. If it is local, then select YES; in the following screen you will select which hard drive will be part of the local Audio Volume.



In the case of having a remote Audio Volume, you would select NO. The following screen is to select the primary and secondary servers (it's a good idea to have the servers installed first).



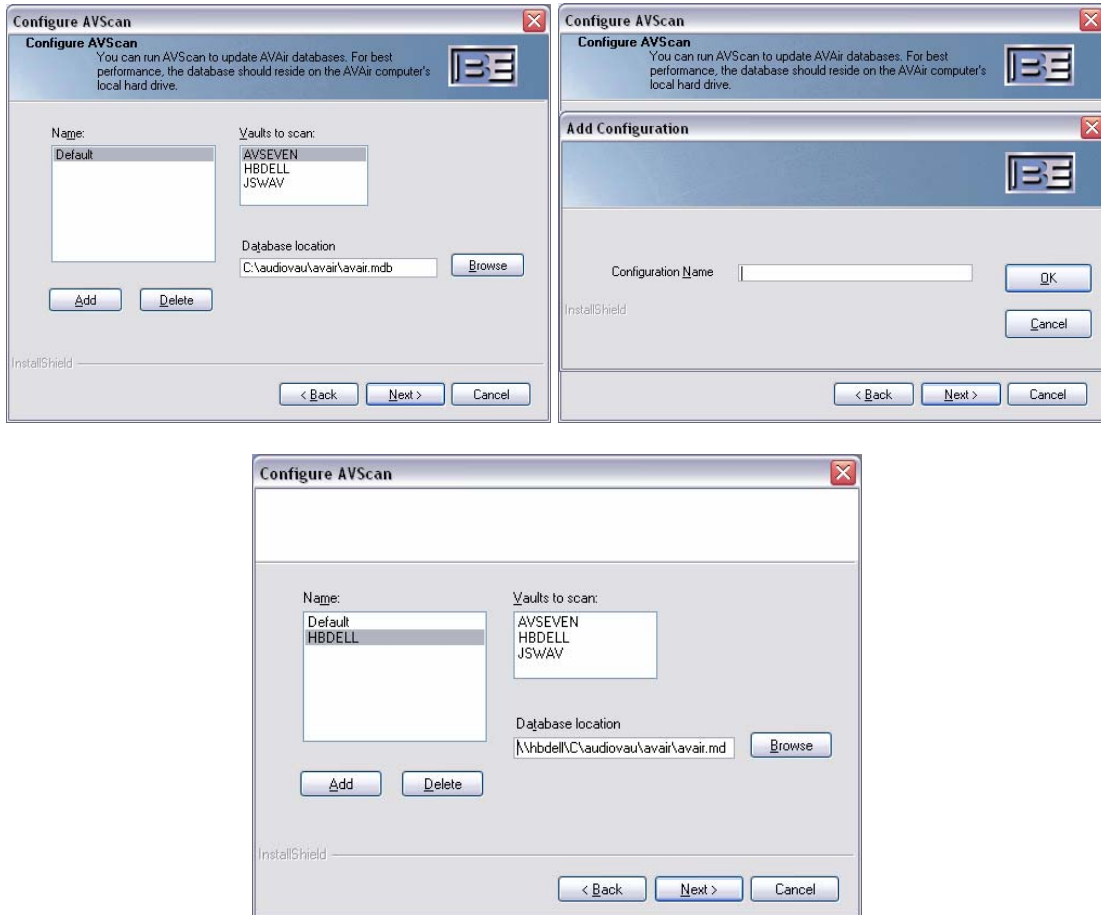
Another change made is the Other AudioVAULT Systems, where you can select other AV servers that this PC will communicate with. The New Select Network Computer browser can help you find the computer name, and if it already has AudioVAULT installed, it will detect its current configuration. In a new installation you will only have to type the computer name or browse for it and the setup program will try to find its `audiovau.ini` file in its Windows directory.

If C drive (Operating System) is not shared, the setup program will not have access to detect and read the `audiovau.ini` and `av2k.ini` from which it gathers current configuration and adds them to the PC where setup is being done.

For additional information on this topic, please contact Broadcast Electronics Digital Customer Service at 217.224.4700. You can also email specific questions to service@bdcast.com.

If the share name for drive C: is not C, it will appear as though it cannot find the ini file. However, when the second screen appears (which includes the path) it will bring up the correct path on upgrade or the user can supply the path on new installs.

The Configure AVScan screen also had some changes; it was simplified to select a VAULT and the corresponding database. Now one instance of AVScan can scan more than one database. This is achieved using the Add button in this screen.



All other setup steps remain the same as in previous versions.

For additional information on this topic, please contact Broadcast Electronics Digital Customer Service at 217.224.4700. You can also email specific questions to service@bdcast.com.