

Configuring TRE for Tagging with Jump2Go

Application Guide



Configuring TRE for Tagging with Jump2Go
597-2500-001 Revision A
Effective: 07/2009

Copyright ©2009 Broadcast Electronics, Inc. All rights reserved.

No part of this publication may be reproduced, transmitted, transcribed, stored in a retrieval system, translated into any other language in any form or by any means, electronic or mechanical, including photocopying or recording, for any purpose, without the express written permission of Broadcast Electronics Inc.

Trademarks

AudioVAULT is a registered trademark of Broadcast Electronics Inc. All other trademarks are the property of their respective owners.

Notice

The information in this publication is subject to change without notice. Although every effort is made to ensure the accuracy of the information in this manual, Broadcast Electronics Inc accepts no responsibility for any errors or omissions.

Table of Contents

- 1.1 Introduction..... 1
 - 1.1.1 Requirements for iTunes Tagging on HD Radio..... 1
 - 1.1.2 Requirements for iTunes Tagging on RDS..... 1
- 2.1 Configuring TRE for Communication with Jump2Go..... 2
- 3.1 Configuring TRE for HD Radio iTunes Tagging with Jump2Go..... 3
- 4.1 Configuring TRE for RDS iTunes Tagging with Jump2Go..... 4
- 5.1 Testing & Troubleshooting..... 5
 - My Enable options for RDS or HD Radio are grayed out..... 5*
 - The Add JumpGate button does not appear in the RDS Encoder section..... 5*
 - How do I know if my events are being tagged?..... 5*
- 6.1 Reference Diagrams..... 6
 - 6.1.1 iTunes Tagging on RDS & HD Radio Main Channel..... 6
 - 6.1.2 iTunes Tagging on HD Radio Multicast Channel..... 7



1.1 Introduction

Tagging is a process in which a unique ID is associated with an on-air event. This ID is then picked up by a receiver or other supported device so that a listener can tag the event for more information or purchase.

Configuration for Tagging is a multi-step process, you first must configure TRE to perform a lookup on the Jump2Go Server, then configure the output for RDS and/or HD. This document will take you through the software set up process for configuring Tagging features with an existing TRE.

! This document assumes that you have already installed and are running TRE and that you have purchased all required TRE licenses. Reference diagrams are available at the end of this document.

1.1.1 Requirements for iTunes Tagging on HD Radio

- The Radio Experience (TRE) software - Version 2.3.37Q (or later)
- HD Output License for TRE
- Jump2Go License for TRE
- HD Radio Exporter - Firmware 2.3.3 (or later)
- HD Radio Importer - Firmware (for Multicast) 2.1.5 (or later)

1.1.2 Requirements for iTunes Tagging on RDS

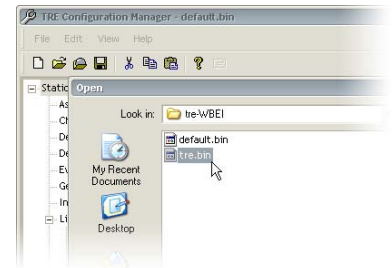
- The Radio Experience (TRE) software - Version 2.9 B5 (or later)
- RDS Output license for TRE
- Jump2Go & JumpGate License for TRE
- JumpGate Device
- RDS encoder: BE RDi 20, Inovonics 711, or Audemat Aztec FMB80



2.1 Configuring TRE for Communication with Jump2Go

t When you open the Configuration Tool, be sure to load the correct **tre.bin** file, typically located in your station's TRE data directory. Click **File>Open**, browse to your station data directory (**tre-<CALLS>**) and select **tre.bin**.

1 Launch the TRE Configuration Tool and load the correct TRE.BIN file for your station.



2 In the feature tree under **Licensed Features**, select **MetaData Lookup**. Set or verify the following parameters:

Enable Metadata lookup: This box must be checked to enable the feature.

URL: Verify the URL for the Jump2Go service:

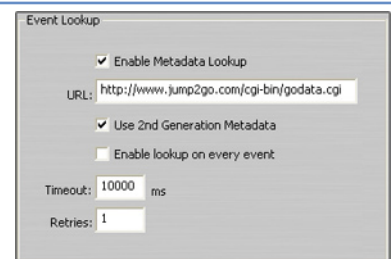
<http://www.jump2go.com/cgi-bin/godata.cgi>

Use 2nd Generation Metadata: This box must be checked for iTunes tagging.

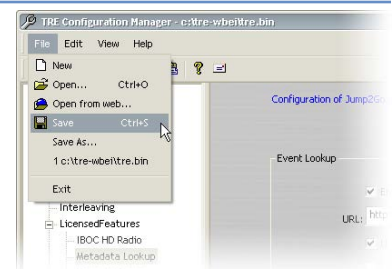
Enable lookup on every event: This box should remain unchecked.

Timeout: Duration in milliseconds before reconnect after a timeout. Generally, the default value of 10000ms is sufficient.

Retries: Number of retry attempts if a connection to can not be established. Generally, the default value of 1 is sufficient.



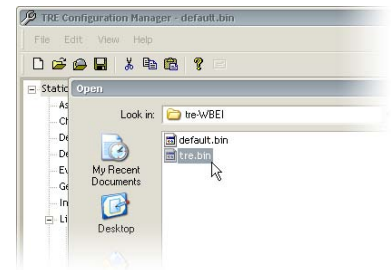
3 Save the TRE.BIN file by clicking **File>Save**. Exit the TRE Configuration Tool.



3.1 Configuring TRE for HD Radio iTunes Tagging with Jump2Go

t When you open the Configuration Tool, be sure to load the correct **tre.bin** file, typically located in your station's TRE data directory. Click **File>Open**, browse to your station data directory (**tre-<CALLS>**) and select **tre.bin**.

1 Launch the TRE Configuration Tool and load the correct TRE.BIN file for your station.

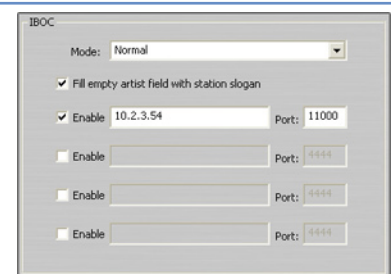


2 In the feature tree under **Licensed Features**, select **IBOC HD Radio**. Set or verify the following parameters:

Mode: Set to **Normal**.

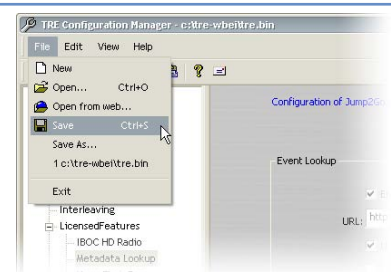
Fill empty artist field with station slogan: Checking this box will cause TRE to pass the station slogan in the artist field during generic messages. Some HD Radio receivers "hang on" to the previous artist if the field is not updated.

Exporter/Importer Address Fields: Select **Enable** on one of the IP fields. Enter the IP of your HD Radio Exporter (or Importer) and the appropriate port. Port settings must be provided by your Exporter/Importer vendor.



! **Additional IP fields are for back up units only. Multicasting requires additional instances of TRE.**

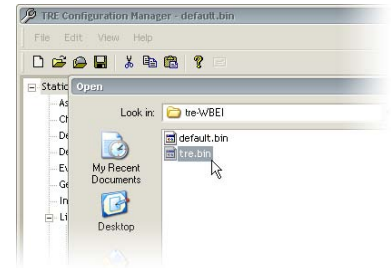
3 Save the TRE.BIN file by clicking **File>Save**. Exit the TRE Configuration Tool.



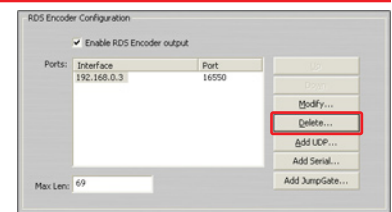
4.1 Configuring TRE for RDS iTunes Tagging with Jump2Go

t When you open the Configuration Tool, be sure to load the correct **tre.bin** file, typically located in your station's TRE data directory. Click **File>Open**, browse to your station data directory (**tre-<CALLS>**) and select **tre.bin**.

1 Launch the TRE Configuration Tool and load the correct TRE.BIN file for your station.



! If you currently have TRE configured to communicate with your RDS encoder, delete this configuration from TRE. Highlight the **Interface/Port** for the RDS encoder and click the **Delete** button. With RDS tagging TRE will now communicate with your RDS encoder through the JumpGate device.

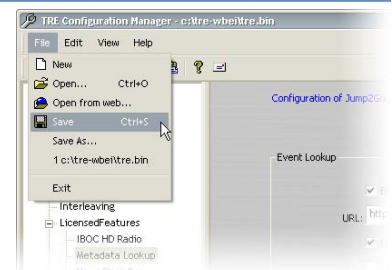


2 In the feature tree under **Licensed Features**, select **RDS Encoder**.

1. Click **Add JumpGate**.
2. Enter the **IP Address**, **Port**, **User Name**, and **Password** provided by Jump2Go.
3. Click **OK** to confirm the settings and create the interface profile.



3 Save the TRE.BIN file by clicking **File>Save**. Exit the TRE Configuration Tool.



?

My **Enable** options for RDS or HD Radio are grayed out.

- This indicates the feature is not properly licensed. Contact Broadcast Electronics for an updated license key.

?

The **Add JumpGate** button does not appear in the RDS Encoder section.

- This indicates the feature is not properly licensed. Contact Broadcast Electronics for an updated license key.

?

How do I know if my events are being tagged?

- The TRE debug log will display a return from Jump2Go with a SongID if the song was successfully tagged.
- Also the TRE as-run log will display the HD Radio UFID next to the Title and Artist data.
- You will need a Tagging compatible device or monitor to test for successful transmission of the tag over the air.

Service contact information:

BE Technical Services

service@bdcast.com
217-224-4700

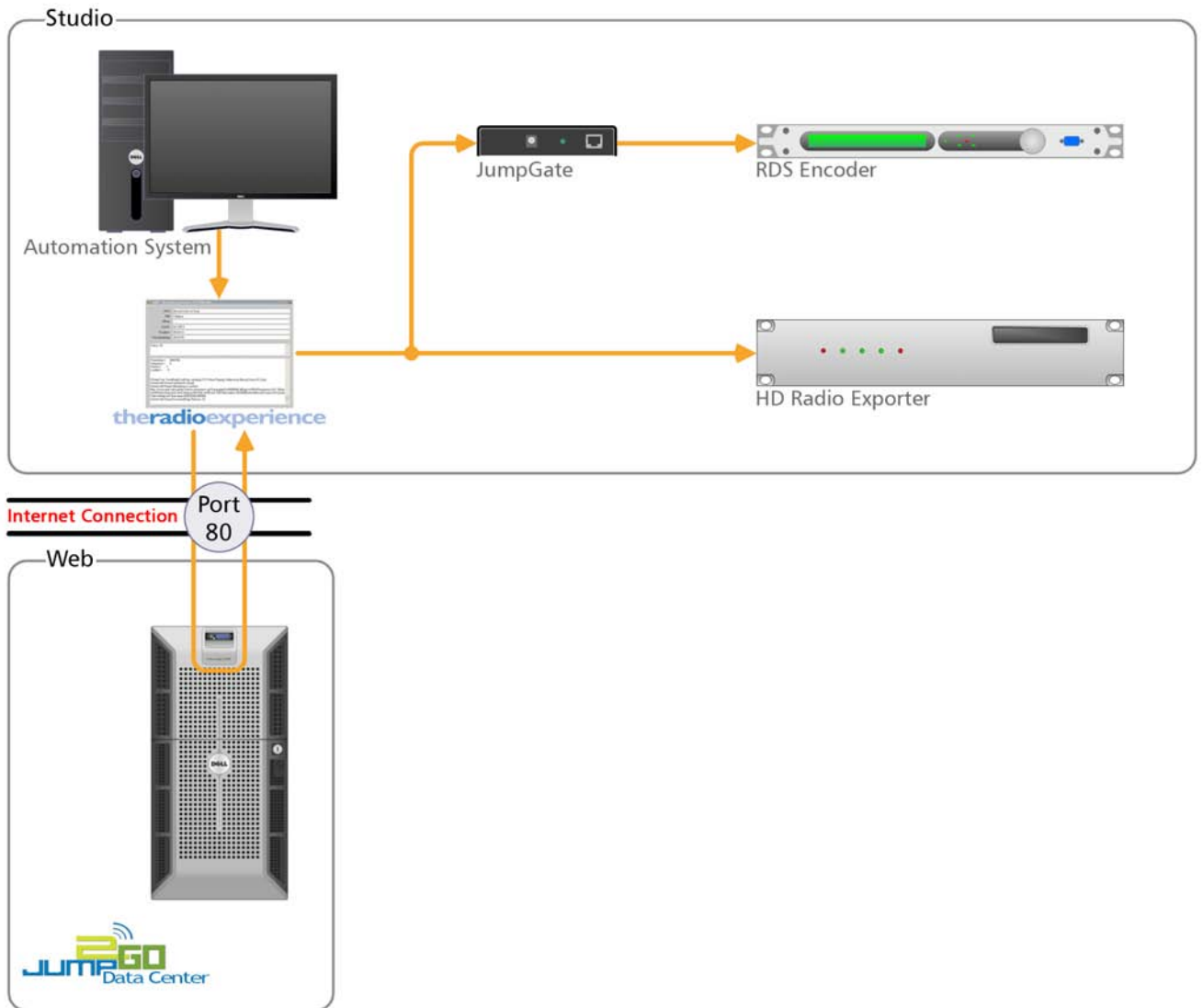
Jump2Go Support

www.jump2go.com/support
alex@jump2go.com



6.1 Reference Diagrams

6.1.1 iTunes Tagging on RDS & HD Radio Main Channel



6.1.2 iTunes Tagging on HD Radio Multicast Channel

